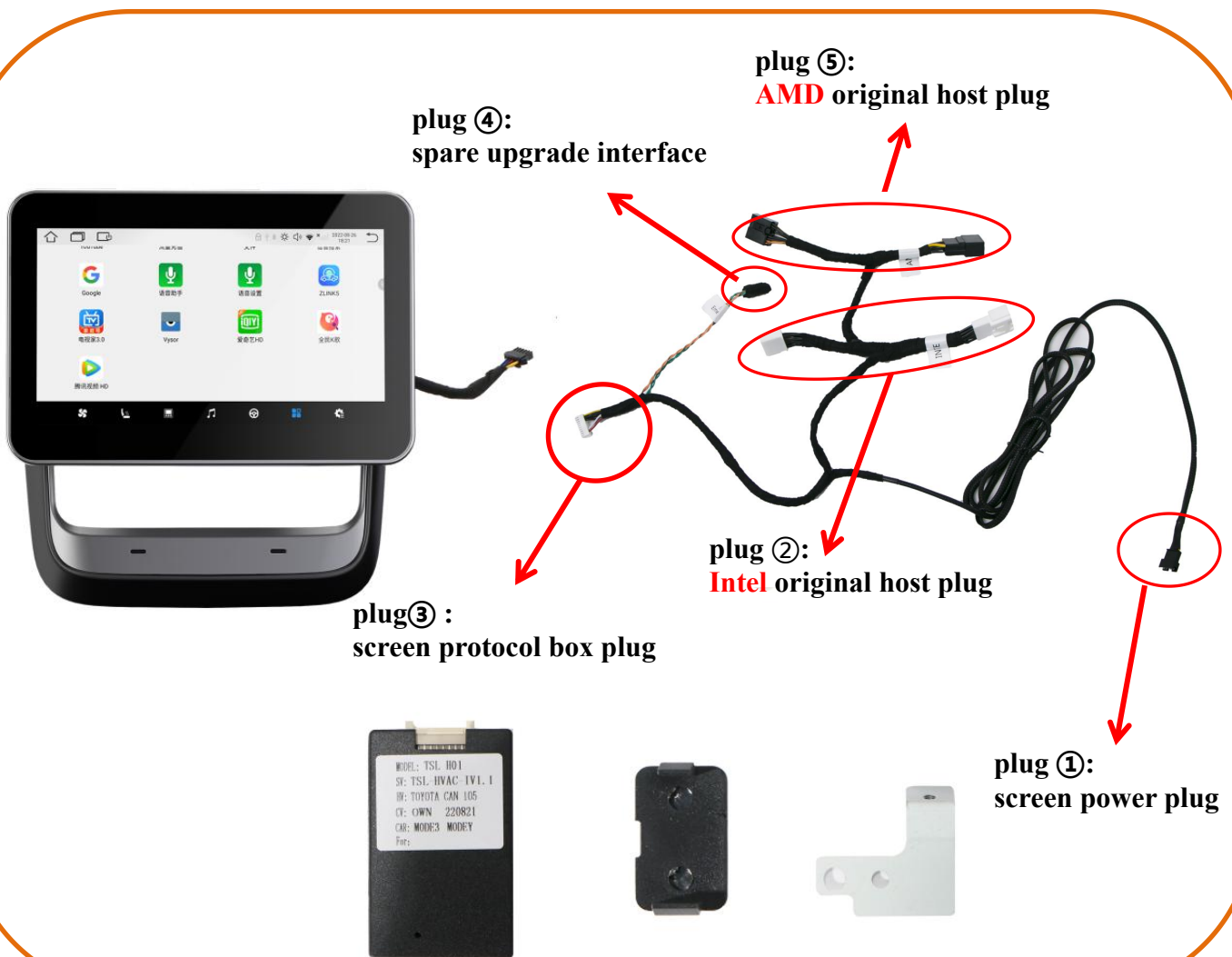


Note:

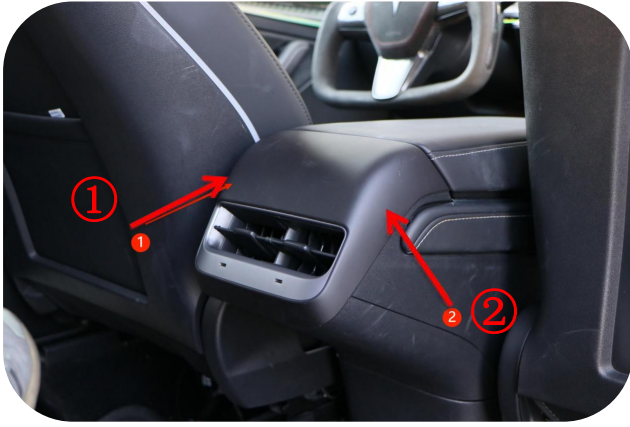
1. The installation instructions may differ slightly from the actual operation. If there are any differences, please follow the actual situation or contact us.
2. Warning: Please do not disassemble any part by yourself, any improper operation will not be covered by our warranty.



Product Diagram



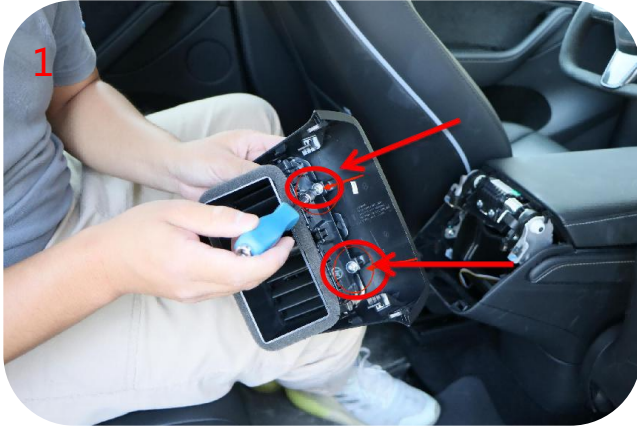
Intallation Steps



1. First, Remove the rear exhaust outlet trim panel; pull out with both hands according to the arrow



2. Unplug the USB charging plug according to the arrow in the picture



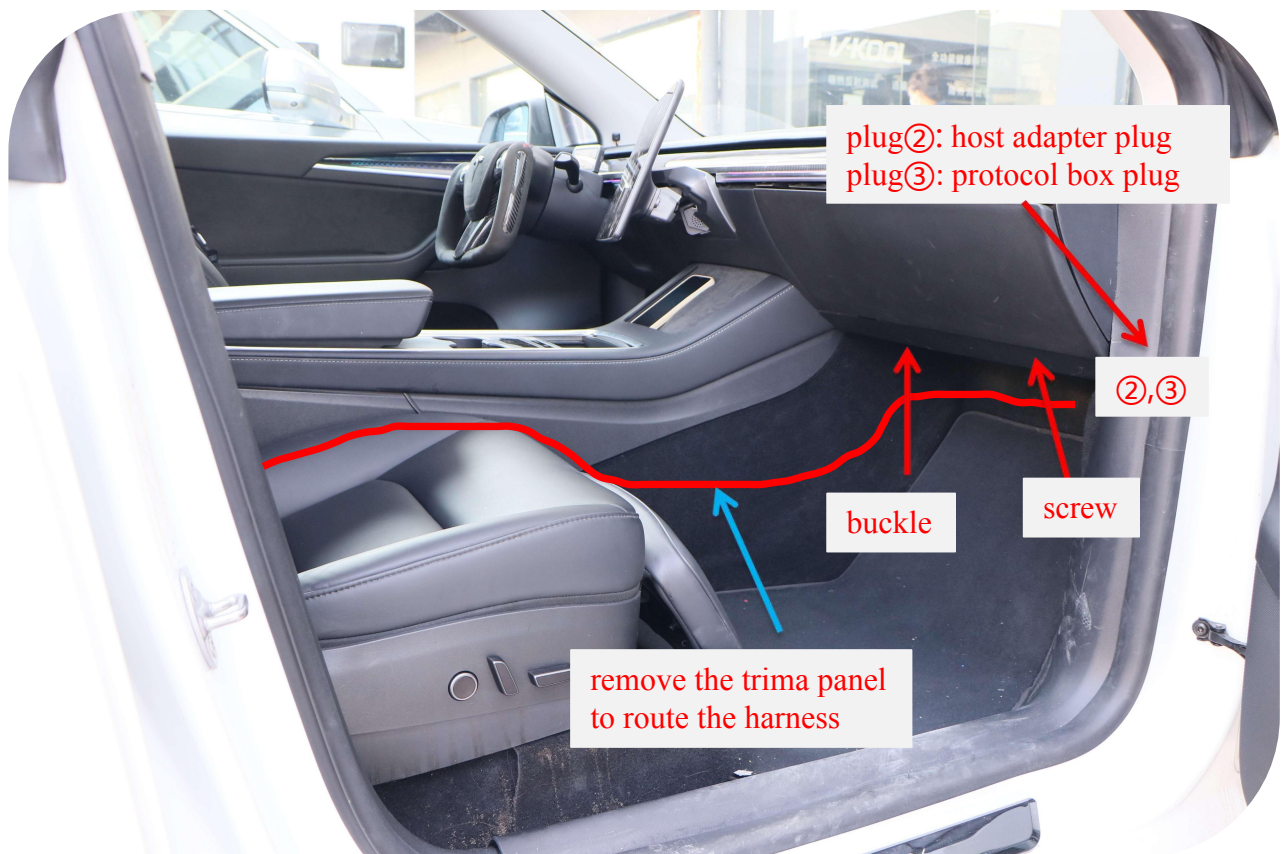
3. As shown in the picture, remove the two fixing screws of the air outlet , and then use a slotted screwdriver or pry bar to pry off the clips of the air outlet along the left and right sides; then pull out the air outlet cover, remove the two screws to take out the charging board



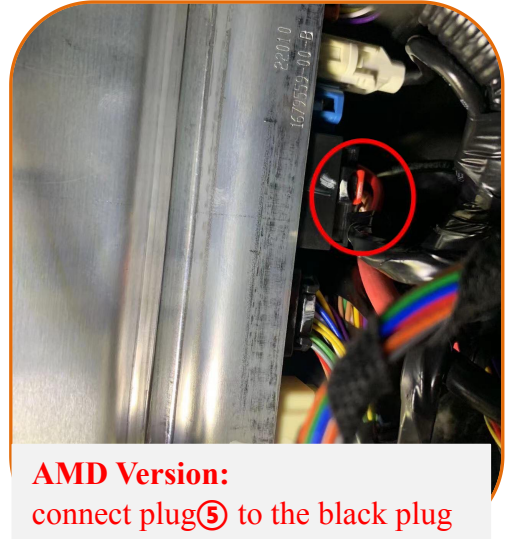
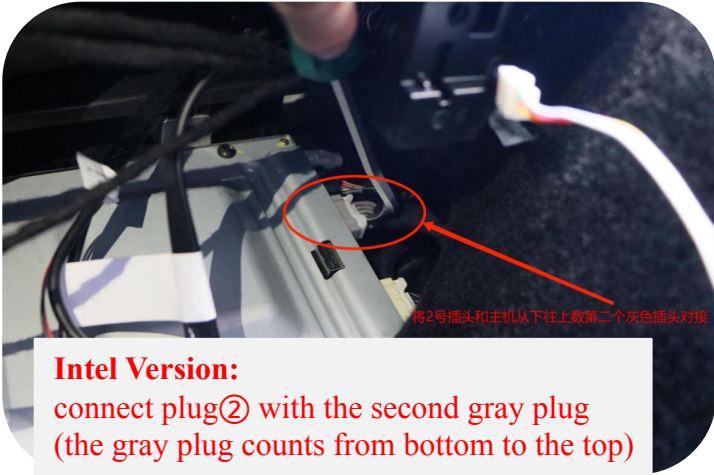
4. Fix the wireless charging board on the interior trim panel of the rear entertainment screen; and then tighten the screws. Install the air conditioner outlet above the trim panel of screen, and then tighten the screws.



5. Connect the **power cable ①** of the screen with the **extension cable ①**, then wrap the plug with tape, and buckle the screen into the armrest box position by hand; Connect the USB charging plug to the wireless charging board, and then route the extension cable along the marking position of the armrest box to the original host position above the passenger's footwell



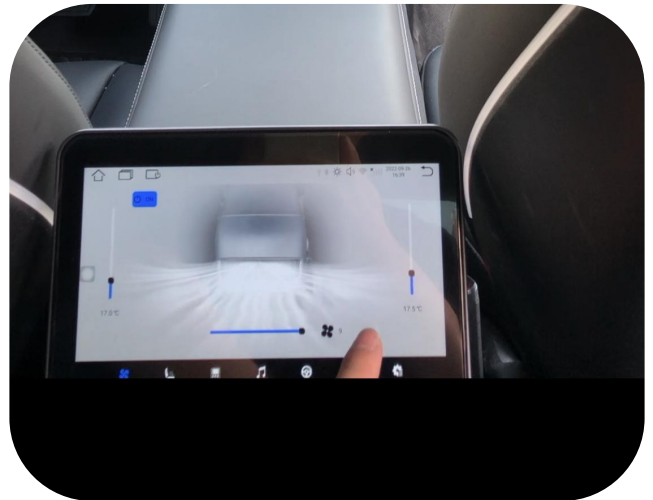
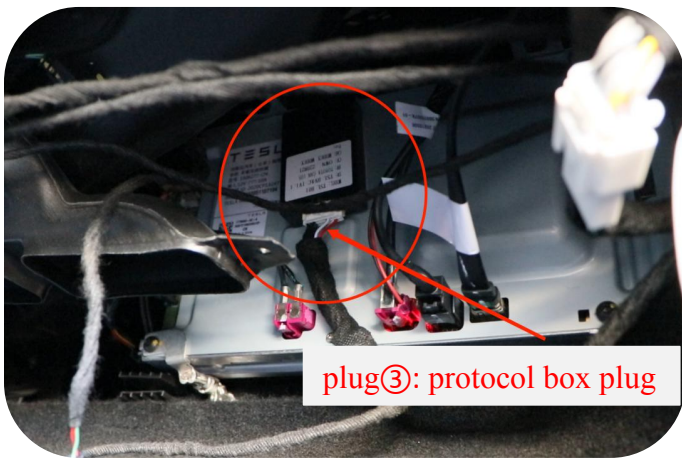
6. As shown by the arrow in the picture, route the along the armrest box: remove the inner trim panel of the armrest box, and then remove the co driver's footwell trim panel, unscrew the right screw and the left buckle.



7. Close the other three doors, raise the window and keep it still, click the button to turn off the power on the original control screen, (Note: Be sure to complete the plug connection within 1 minute).

Intel Version: Connect the **plug 2** with the second gray plug (the gray plug counts from bottom to the top)

AMD Version: connect the **plug 5** to the black plug



8. Connect the **plug 3** into the protocol box, paste the protocol box above the original vehicle's host and fix it. Finally restore the trim panel.

8. Restore all trim panels and test the screen