

Parts List

parts list diagram



①	Gear Shifter Stalk	⑤	fixing gasket
②	AMD power cable	⑥	outer cover
③	upper cover	⑦	lower cover
④	lower silicone sheet	⑧	threading plastic strip & screw

1. Tool bag

Scissors; small flathead screwdriver; pry bar; threading strips; phillips screwdriver; T20 socket.

2. Caution

To prevent accidents, make sure the power is off before installation.

Please read the instructions carefully for fast installation.

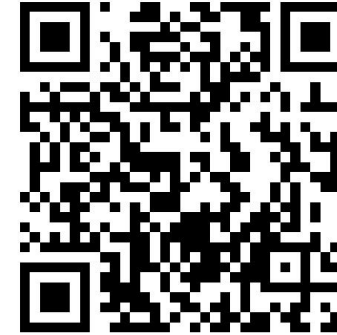
Disclaimer and Notes

Warnings and Disclaimers

Important notice: Welcome to purchase our company's products. In order to protect the legitimate rights and interests of users, we hereby remind users that you must carefully read and fully understand the terms of this statement before using this product. If you use this product, your use will be deemed to be an acknowledgment of the entire content of this statement, and you agree to be bound by the following terms of this statement, and at the same time bear the consequences caused by irregular use. Hansshow Company reserves the right to update the above documents. Please be sure to operate this product according to the instructions.

Precautions for use

1. Before installation, check whether the product list is complete and damaged.
2. The installation instructions may be slightly different from the actual operation. If there is any difference, please contact us according to the actual situation.
3. Warning: Please do not disassemble any parts by yourself. Any improper operation is not covered by the warranty.
4. Before installing the product, watch the installation video and instructions.
5. Check whether the installed product functions normally.

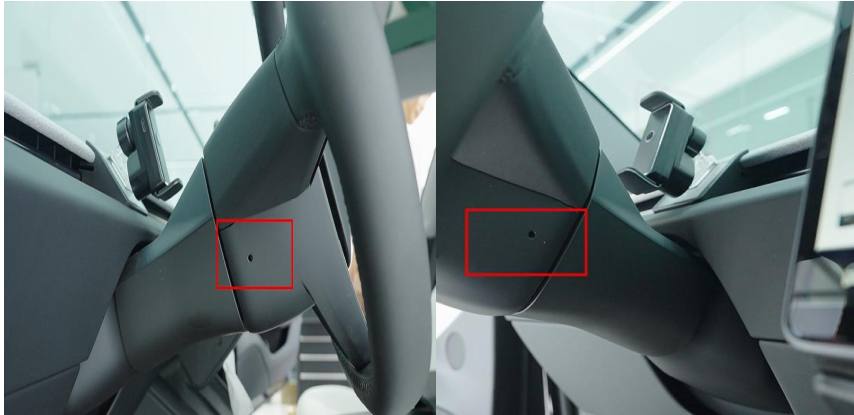


Installation Manual

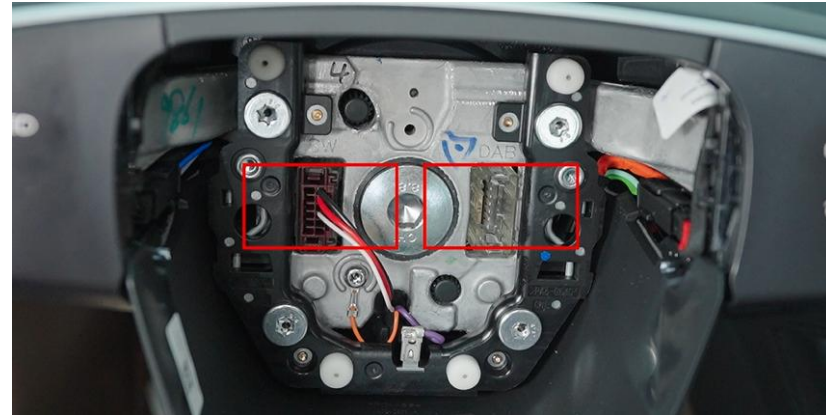


Installation Video

Model 3 Highland Gear Shifter Switch Stalk Installation Manual



1. Insert the small flathead screwdriver into the small hole (as photo) on both sides to remove the airbag



2. Remove the plugs indicated in the photo



3. Unscrew the fixing screw of the steering wheel using the H10 socket (may need 2 people to do this)



4. Remove the steering wheel by shaking it left and right, and then remove the trim panel

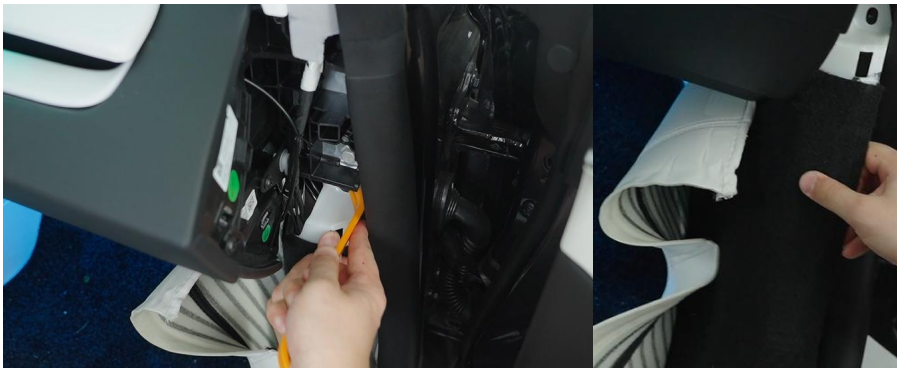
Model 3 Highland Gear Shifter Switch Stalk Installation Manual



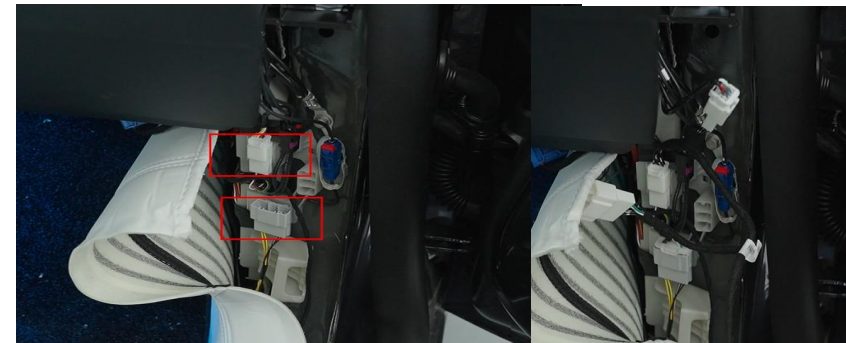
5. Install the gear shift stalk and use the ⑤ fixing gasket and provided screws to keep it in place



6. Remove the left footwell upper trim



7. Remove the right triangle panel and door sill trim



8. Connect the wiring harness indicated in the photo

Model 3 Highland Gear Shifter Switch Stalk Installation Manual



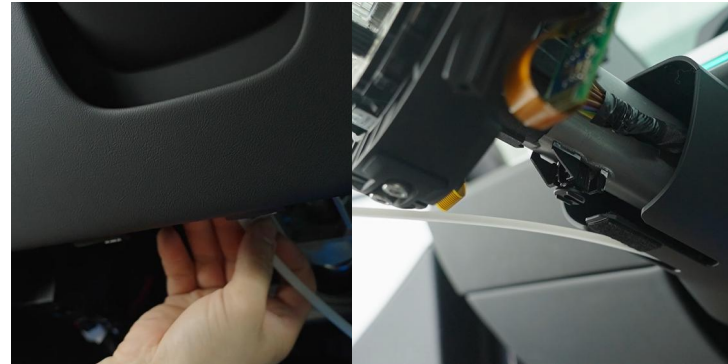
9. Remove the lower cover under the center control screen



10. Use the threading plastic strip from the A-pillar to the bottom of the central control screen

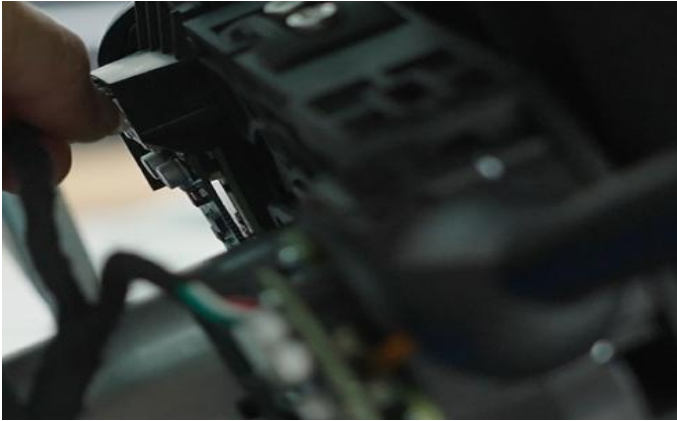


11. Pass the harness from the screen bottom to the driver's footwell



12. Pass the harness to the steering column

Model 3 Highland Gear Shifter Switch Stalk Installation Manual



13. Insert the plug into the stalk for left and right



14. Install the upper and lower covers and put on the small cover



15. Restore the steering wheel

Model 3 Highland Gear Shifter Switch Stalk Function Instruction

Left lever

Action	Function	Notes
Up 2 gear	Turn on the right turn signal light	
Up 1 gear	Turn on/off the right turn signal light	If the right turn signal is on , turn it off by turning it to 1 gear If the right turn signal is off , turn it on by turning it to 1 gear
Down 1 gear	Turn on/off the left turn signal light	If the left turn signal is on , turn it off by turning it to 1 gear If the left turn signal is off , turn it on by turning it to 1 gear
Down 2 gear	Turn on the left turn signal	
Pull in 1 gear	Horn	
Pull out 1 gear	High beam	
Push button 1 gear	open the wiper	
Push button 2 gear	Wiper spray	

Right lever

Action	Function	Notes
Up 2 gear	R gear	
Up 1 gear	N gear	
Down 1 gear	N gear	
Down 2 gear	D gear	In D gear, press once again to start cruise control In D gear, press twice to start autopilot
Push button 1 gear	P gear	

